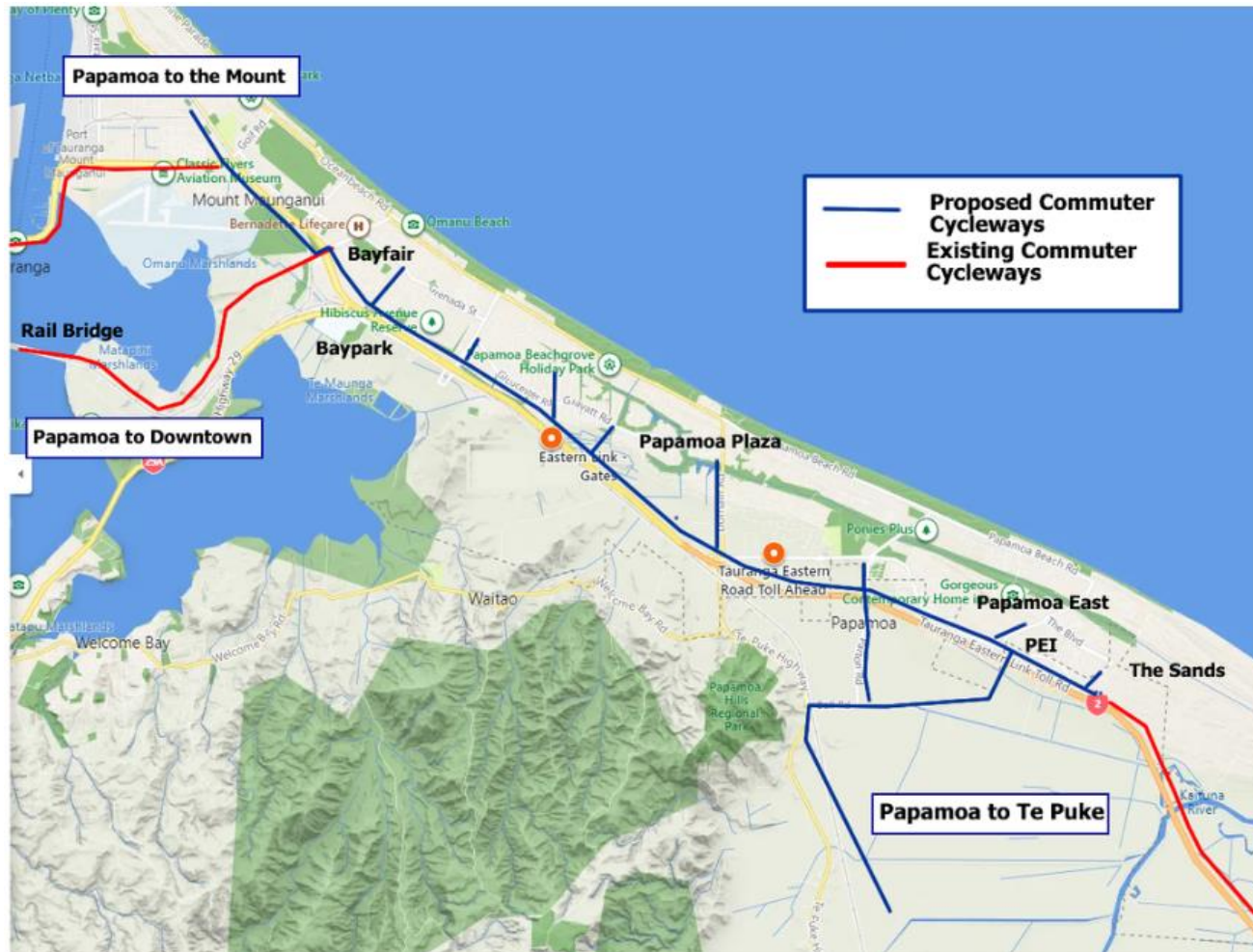


Papamoa/Mt Maunganui/Te Puke Commuter Cycle Routes FINAL October 2022

One of the key parts of the multi-modal transport solution
Also linked into Tsunami Escape route networks
Part of the tourist cycle way from Waihi to Rotorua



Eastern Corridor Alliance

Papamoa/Mt Maunganui/Te Puke Commuter Cycle Routes

One of the key parts of the future multi-modal transport solution
Also linked with Tsunami Escape route networks
Part of the tourist cycle way from Waihi to Rotorua

The future transportation solution is multimodal, some will drive, some will bus, some will bike, scooter and some will walk. You will pick which is best for you. The future is here NOW!

In Tauranga there are not these options for everyone and there are no commuter cycleways from Papamoa to anywhere. Papamoa is flat and suitable for cycleways, especially with the growing numbers of e-bikes.

This is a proposal for a network of cycleways, mostly it uses land which is readily available and travels in the most direct route.

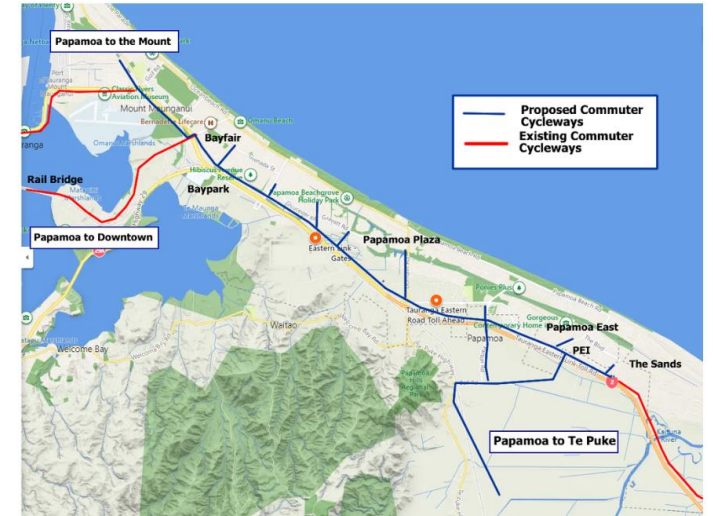
Now all we need is the will from the government, council and community, and of course some finance.

The commuter cycle routes are between

Papamoa to Mt Maunganui

Papamoa to Te Puke

Papamoa to Downtown



Eastern Corridor Alliance

Papamoa/Mt Maunganui/Te Puke Commuter Cycle Routes

One of the key parts of the future multi-modal transport solution

Also linked with Tsunami Escape route networks

Part of the tourist cycle way from Waihi to Rotorua

A highway which will be independent of the major roads.

Not on the sides of the road. Completely separate. Safe.

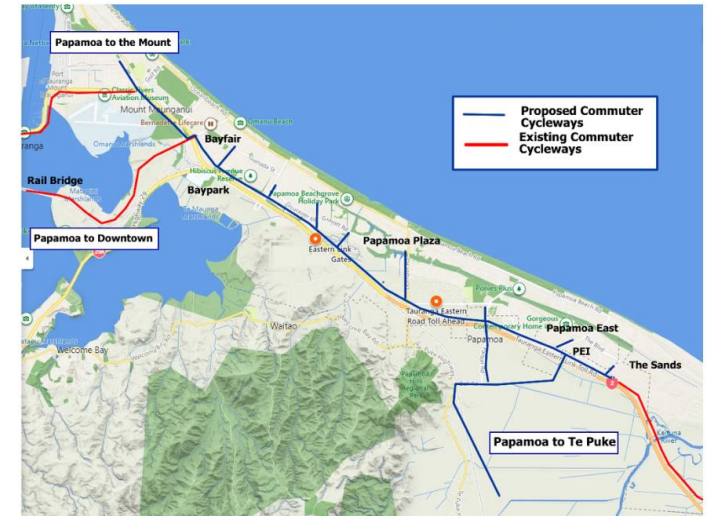
No lanes taken away from roads.

Travel times will be faster, less stopping at road intersections.

Distances are within easy range of E bikes

Link with existing tsunami escape route paths for pedestrians and cyclists

Easy access to/from Papamoa residential areas

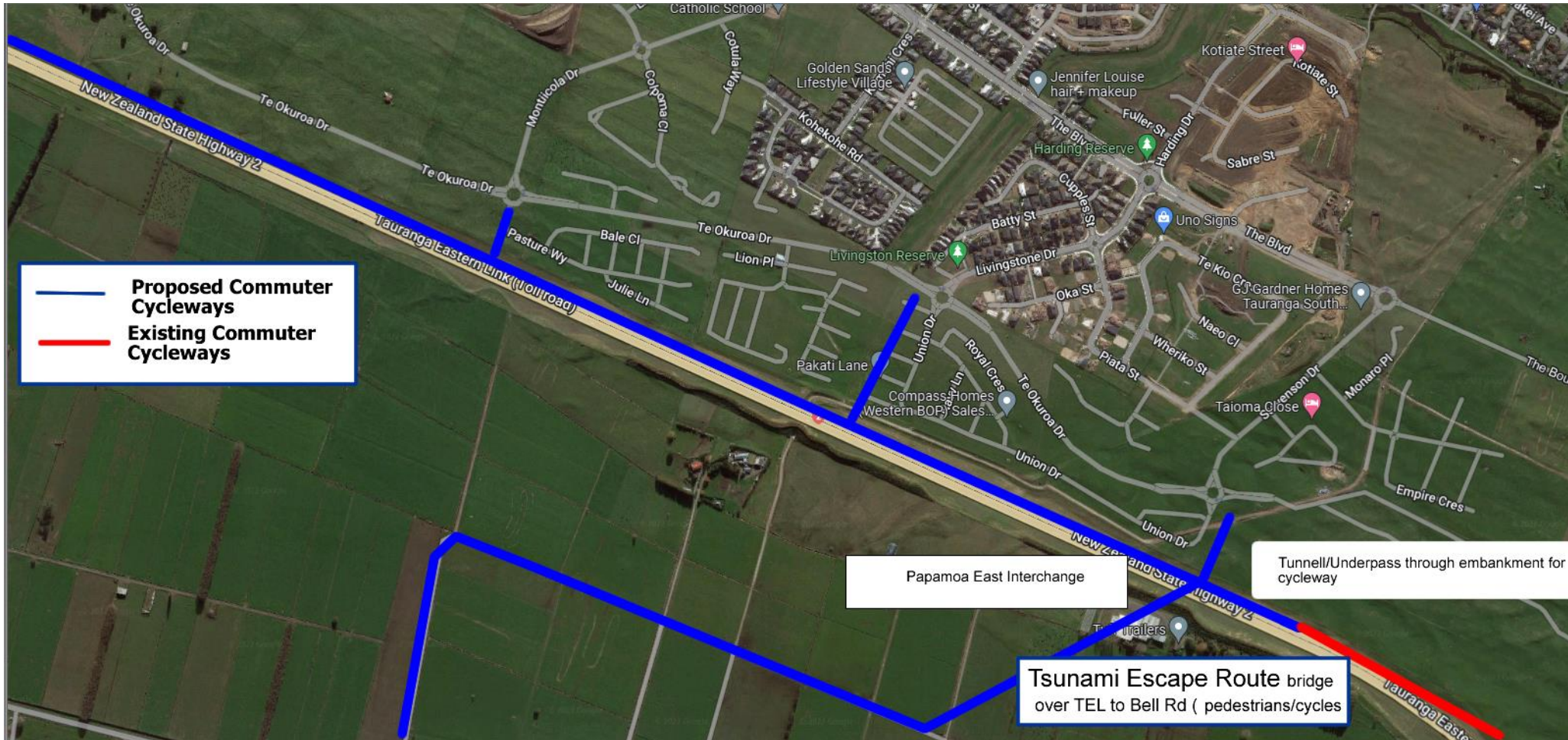
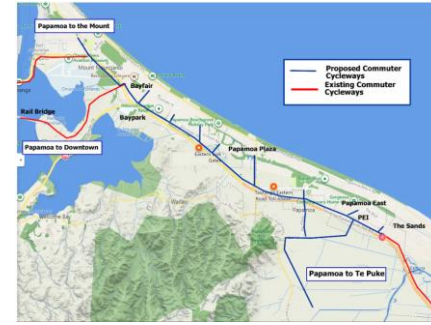


Eastern Corridor Alliance

Papamoa/Mt Maunganui/Te Puke Commuter Cycle Routes

One of the key parts of the multi-modal transport solution

Papamoa East Interchange towards Parton Rd bridge



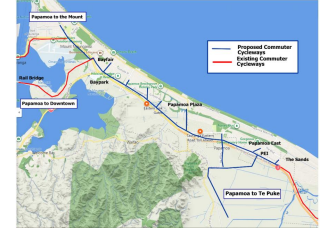
USING PAPAMOEA EASTERN INTERCHANGE TO CONNECT TO BELL RD FOR PAPAMOEA TO TE PUKE COMMUTERS. UNDERPASS/TUNNEL THROUGH THE EMBANKMENT FOR CYCLEWAY. TSUNAMI ESCAPE ROUTE OVER PEI TOWARDS PAPAMOEA HILLS

Eastern Corridor Alliance

Papamoa/Mt Maunganui/Te Puke Commuter Cycle Routes

One of the key parts of the multi-modal transport solution & tsunami escape routes

Parton Rd bridge

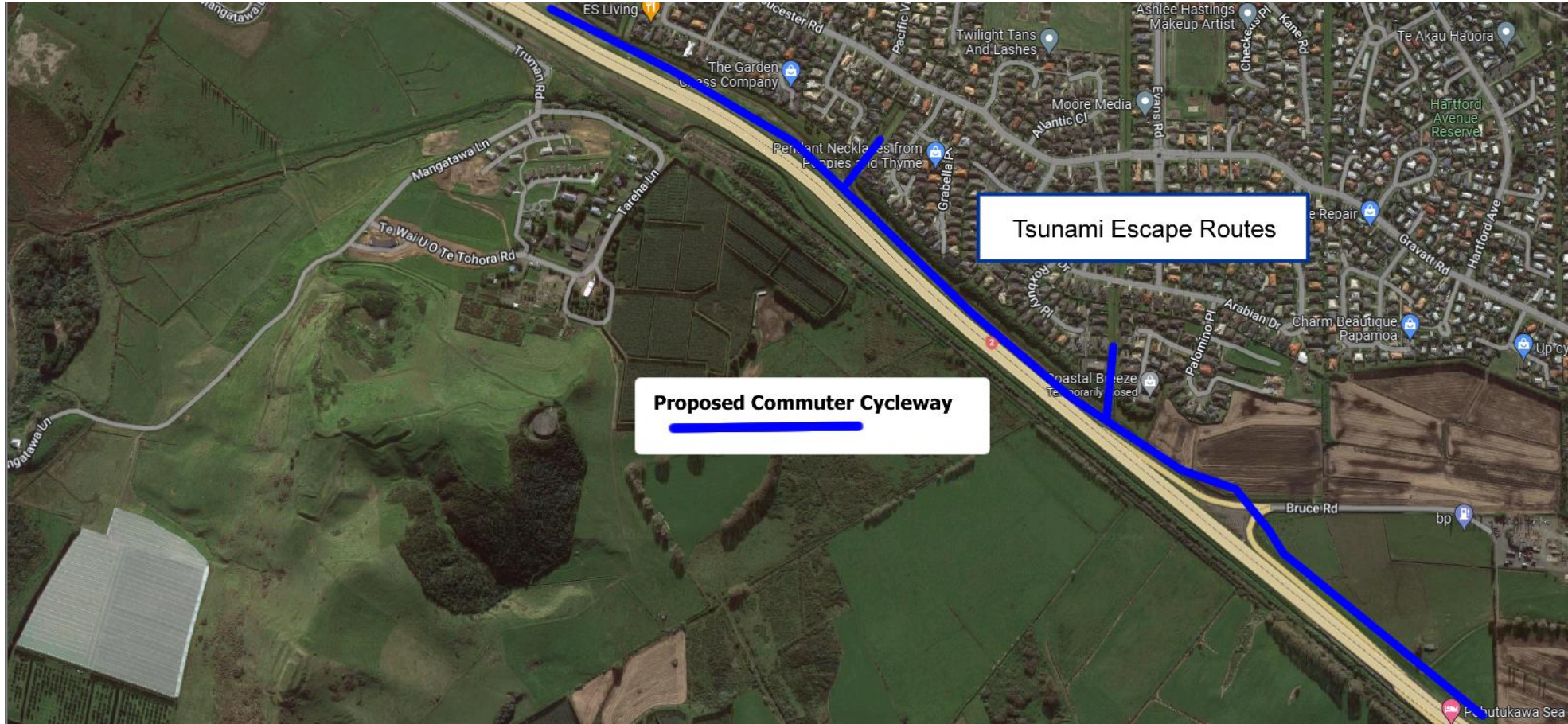


ROUTE TO DOWNTOWN/MOUNT WITH LINKS TO PARTON RD. BUILD TUNNEL THRU EMBANKMENT. CYCLEWAY OVER BRIDGE TO TE PUKE. CAN LINK UP WITH CYCLE WAY DOWN RAIL CORRIDOR TO TE PUKE

Eastern Corridor Alliance

Papamoa/Mt Maunganui/Te Puke Commuter Cycle Routes

One of the key parts of the multi-modal transport solution & tsunami escape routes
From Parton Rd bridge towards Domain Rd off/on ramps



TO DOWNTOWN/MOUNT. AT GRADE SIGNALISED CROSSING AT DOMAIN/TARA RD ROUNDABOUT OR AN UNDERPASS/OVERPASS.
CONNECTION TO DOMAIN RD WITH CYCLE LANE ON DOMAIN RD TO PAPAMOIA CENTRE. OVERBRIDGE FOR TSUNAMI ESCAPE
ROUTE TO WELCOME BAY RD

**Eastern Corridor
Alliance**

Papamoa/Mt Maunganui/Te Puke Commuter Cycle Routes

One of the key parts of the multi-modal transport solution & tsunami escape routes

From Domain Rd towards BP service centre



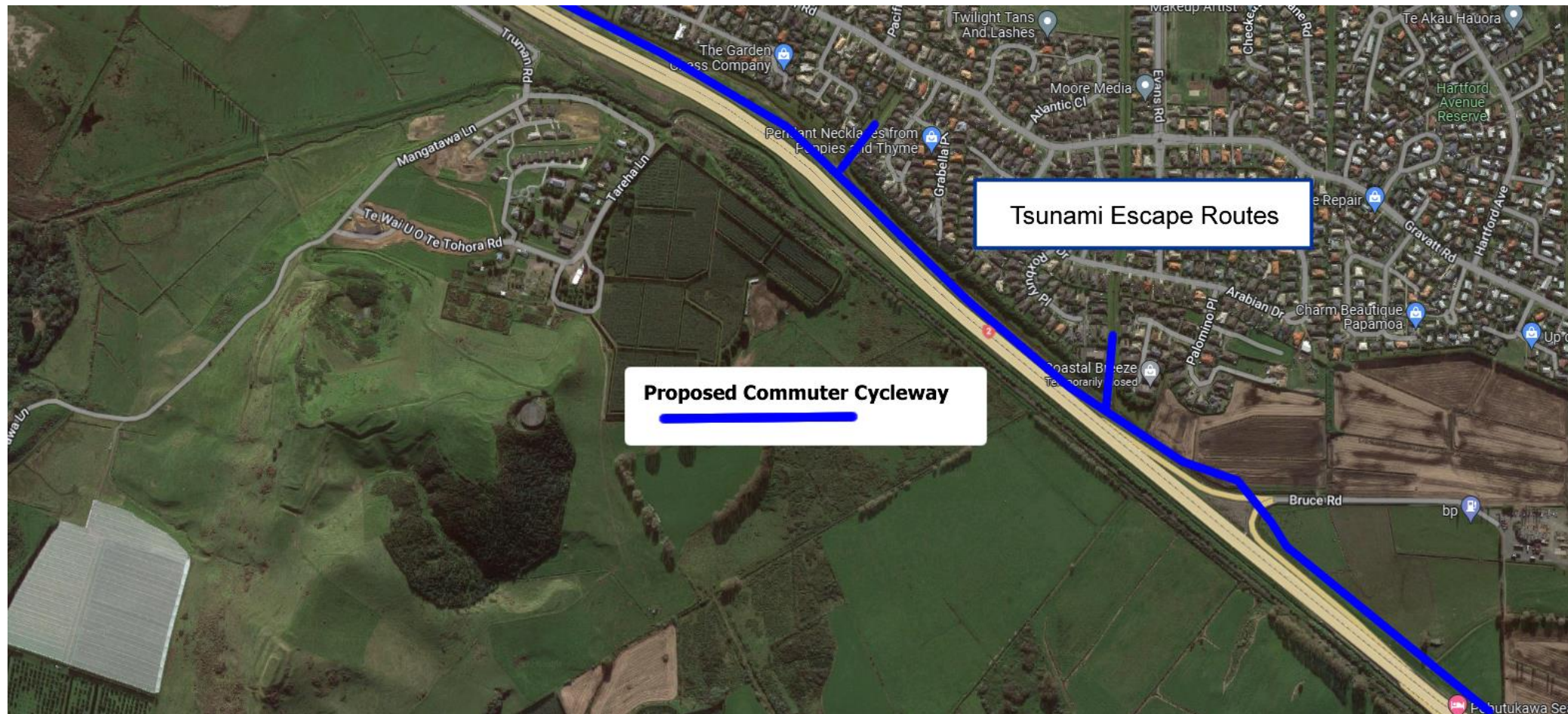
TO DOWNTOWN/MOUNT. LINKS THRU TO GAVATT RD, USING GRASSED AREA BESIDE TEL. TSUNAMI ESCAPE ROUTES LINKED.

Eastern Corridor Alliance

Papamoa/Mt Maunganui/Te Puke Commuter Cycle Routes

One of the key parts of the multi-modal transport solution & tsunami escape routes

From BP service centre towards Sandhurst Rd overbridge

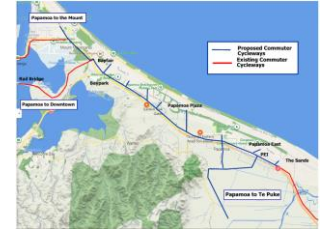


TO DOWNTOWN/MOUNT. USING GRASSED AREA, AT GRADE CROSSING WITH BRUCE RD, FINGER LINKS TO HOUSING USING GRASSED STORMWATER AREAS, CONNECT UP WITH THE TSUNAMI BRIDGES TSUNAMI ESCAPE ROUTES LINKED

Eastern Corridor Alliance

Papamoa/Mt Maunganui/Te Puke Commuter Cycle Routes

One of the key parts of the multi-modal transport solution & tsunami escape routes
From Sandhurst Rd towards Baypark intersection



Tsunami Escape Routes

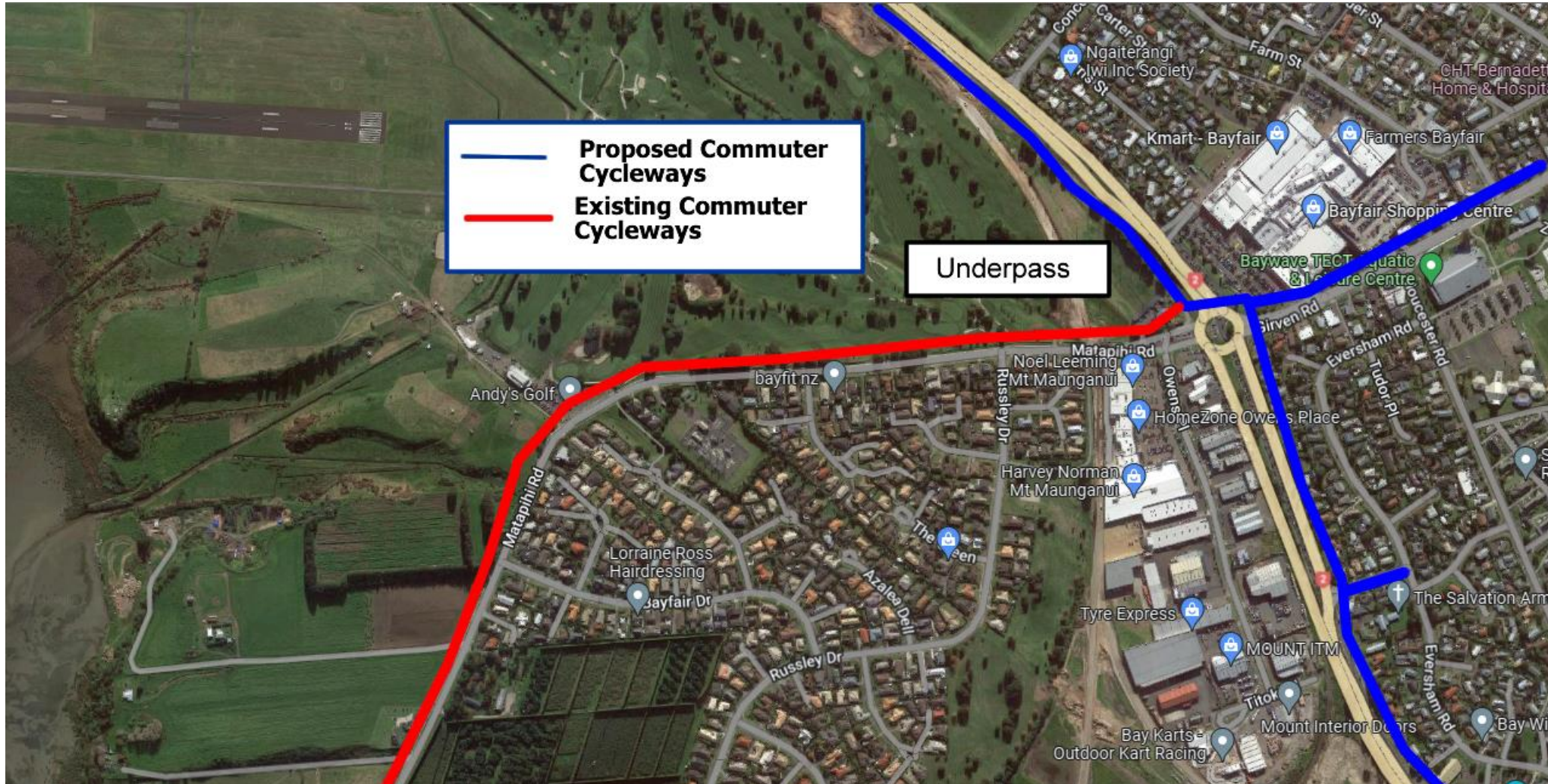
Proposed Commuter Cycleway

Eastern Corridor Alliance

TO DOWNTOWN/MOUNT. UNDERPASS THRU SANDHURST BRIDGE EMBANKMENT. CONNECTION TO TRUMAN LANE. THEN CONNECT WITH EXISTING ROAD FOR A SECTION TOWARDS BAYFAIR

Papamoa/Mt Maunganui/Te Puke Commuter Cycle Routes

One of the key parts of the multi-modal transport solution & tsunami escape routes
From Baypark to Bayfair Shopping Centre/Girven Rd intersections

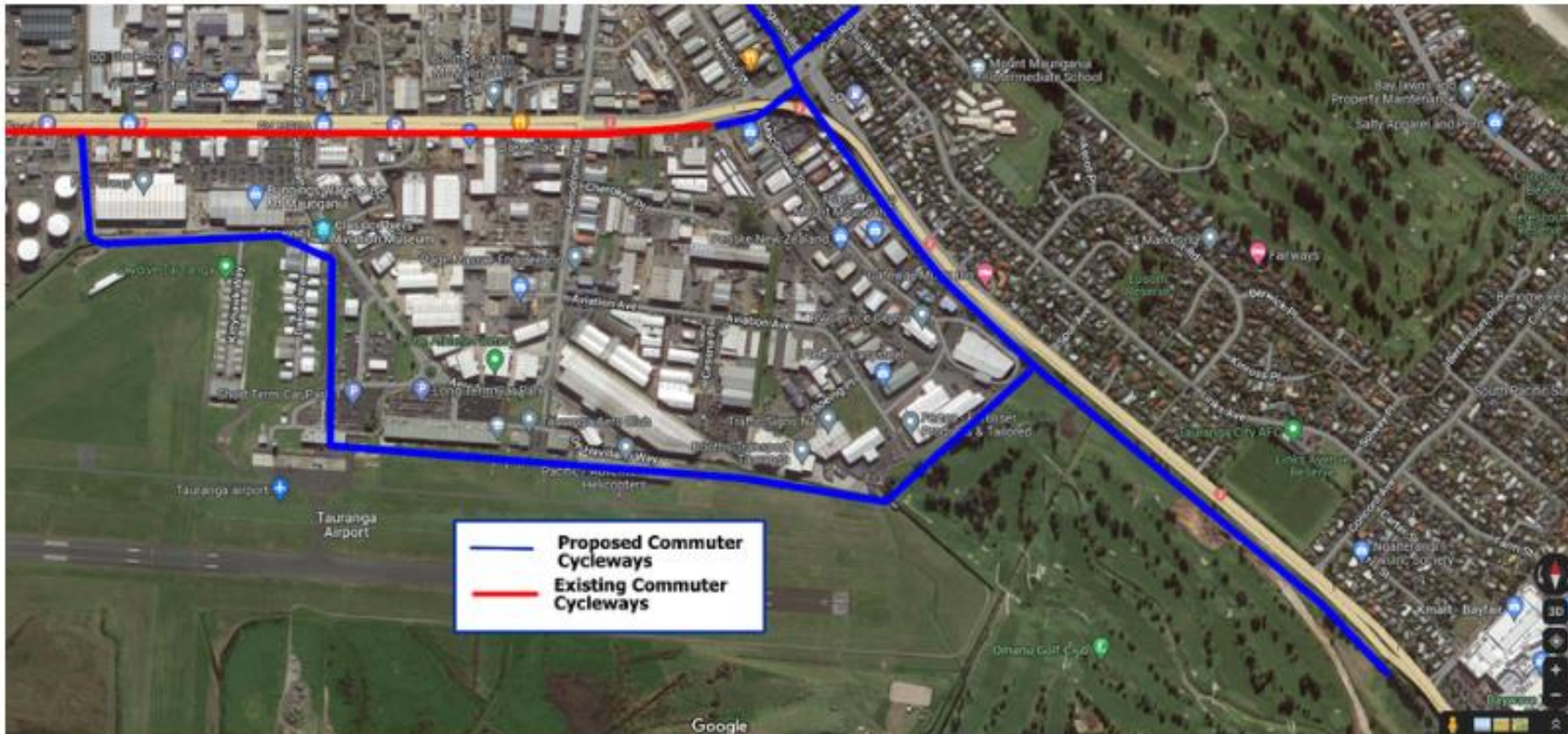
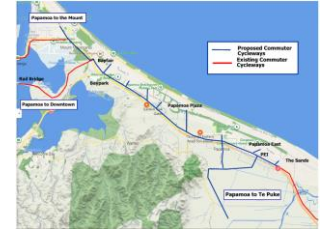


Cross Girven Rd by signalised crossing, use Underpass to cross SH2 and then use Matapihi Rd link to downtown or use NEW TCC cycle lanes alongside golf course to Hewletts Rd and Mount.

Eastern Corridor Alliance

Papamoa/Mt Maunganui/Te Puke Commuter Cycle Routes

One of the key parts of the multi-modal transport solution & tsunami escape routes
From Bayfair intersection to Hewletts Rd and the Mount.



Eastern Corridor Alliance

TWO OPTIONS FOR HEWLETTS RD, CONTINUE ALONGSIDE THE B2B OR AROUND EDGES OF THE GOLF COURSE. THROUGH TO THE MOUNT BY OVERPASS BRIDGE.

Papamoa/Mt Maunganui/Te Puke Commuter Cycle Routes

One of the key parts of the multi-modal transport solution & tsunami escape routes
From BP service centre towards Sandhurst Rd overbridge



CONTINUE ALONGSIDE THE RAIL CORRIDOR HULL RD AND USE ROADS TO THE MOUNT.

Eastern Corridor Alliance

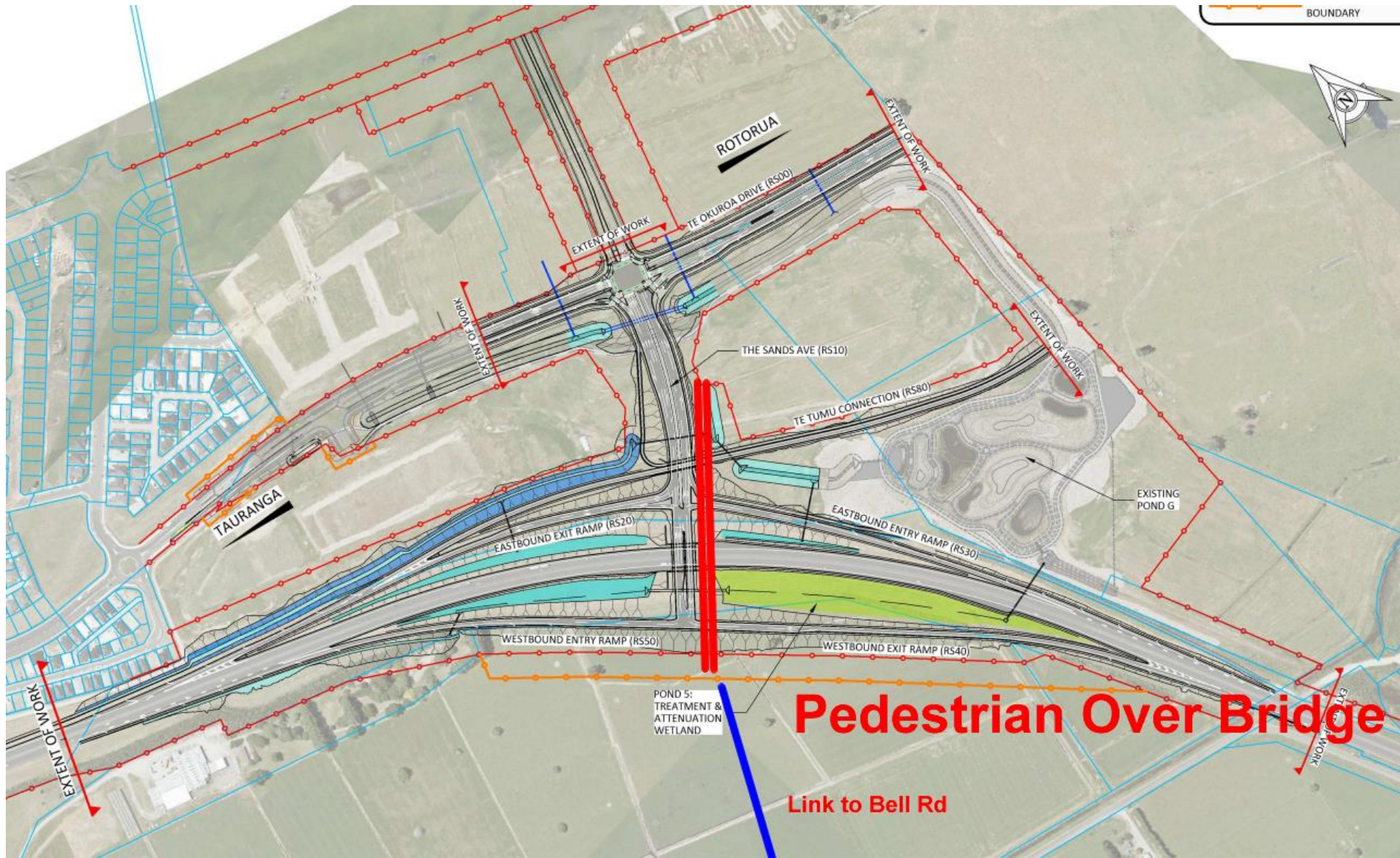
Papamoa/Mt Maunganui/Te Puke Commuter Cycle Routes

Urgent Items: July 2022

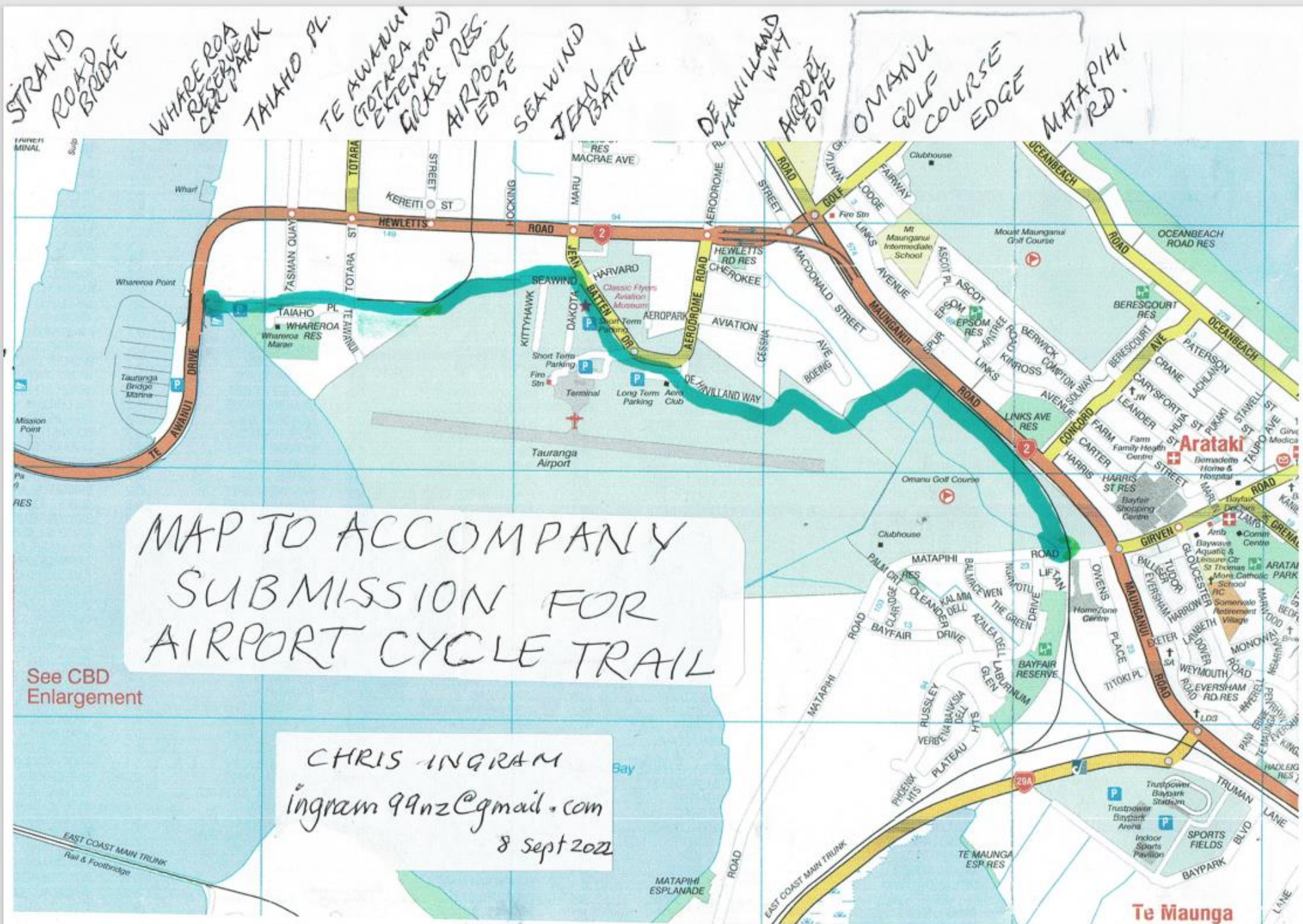
Design underpass/tunnel into the embankment of the Papamoa Eastern Interchange for the cycleway

Pedestrian/Cycle route across Papamoa East Interchange bridge

**Eastern Corridor
Alliance**



Papamoa East Interchange Base Layout from TCC with bridge overlay



MAP TO ACCOMPANY
SUBMISSION FOR
AIRPORT CYCLE TRAIL

CHRIS INGRAM
ingram99nz@gmail.com
8 sept 2022

See CBD
Enlargement

Te Maunga